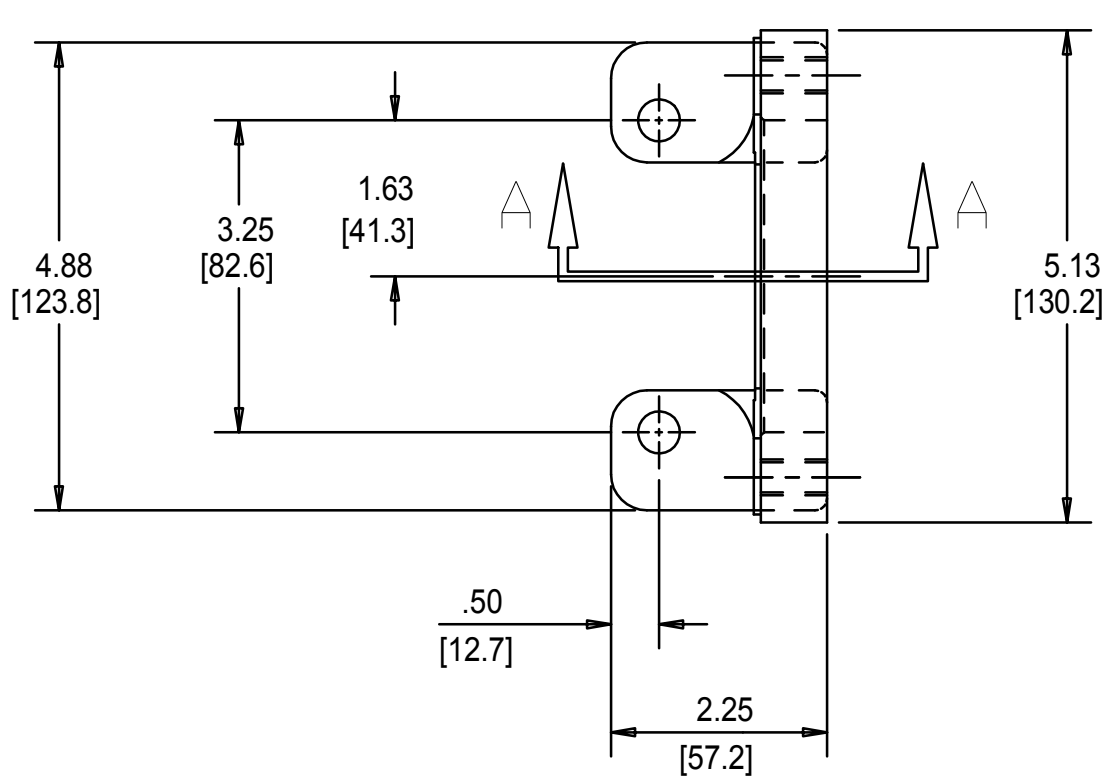
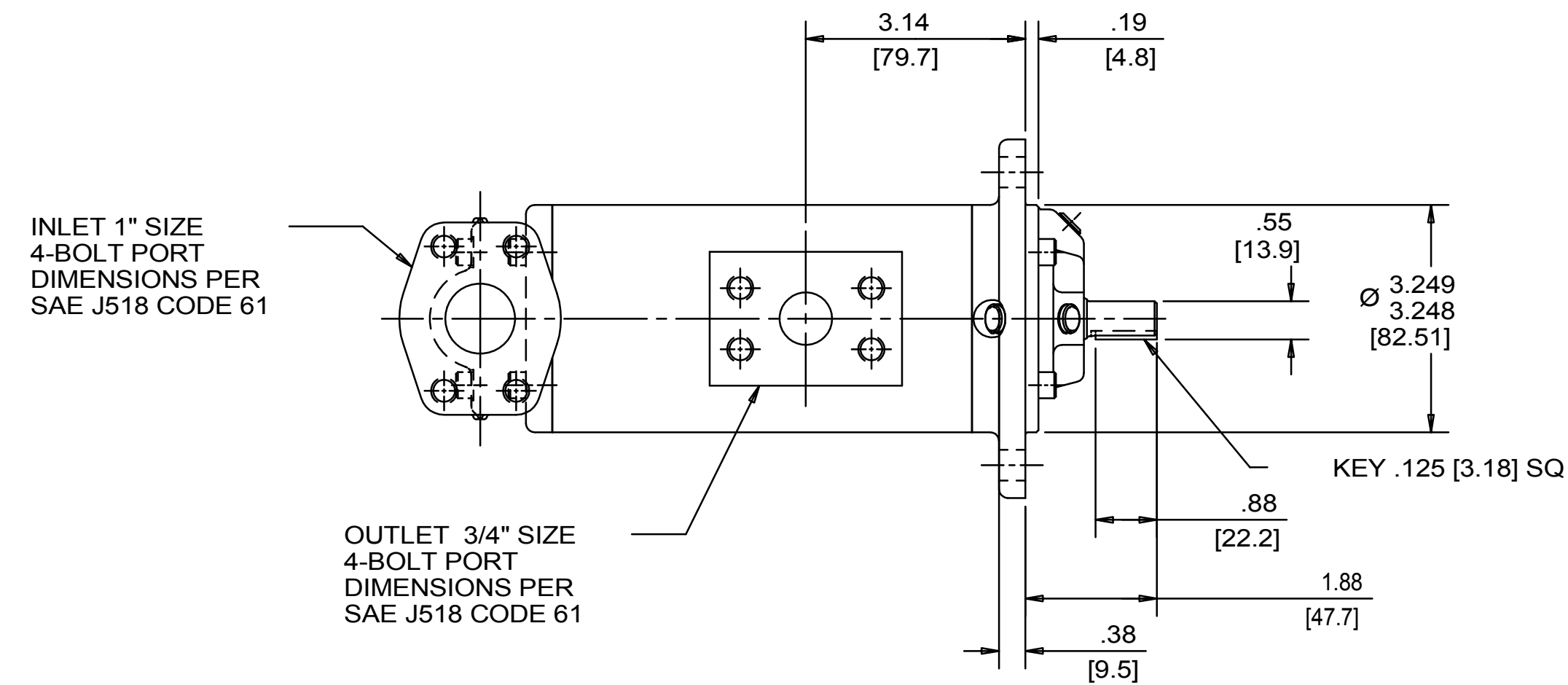
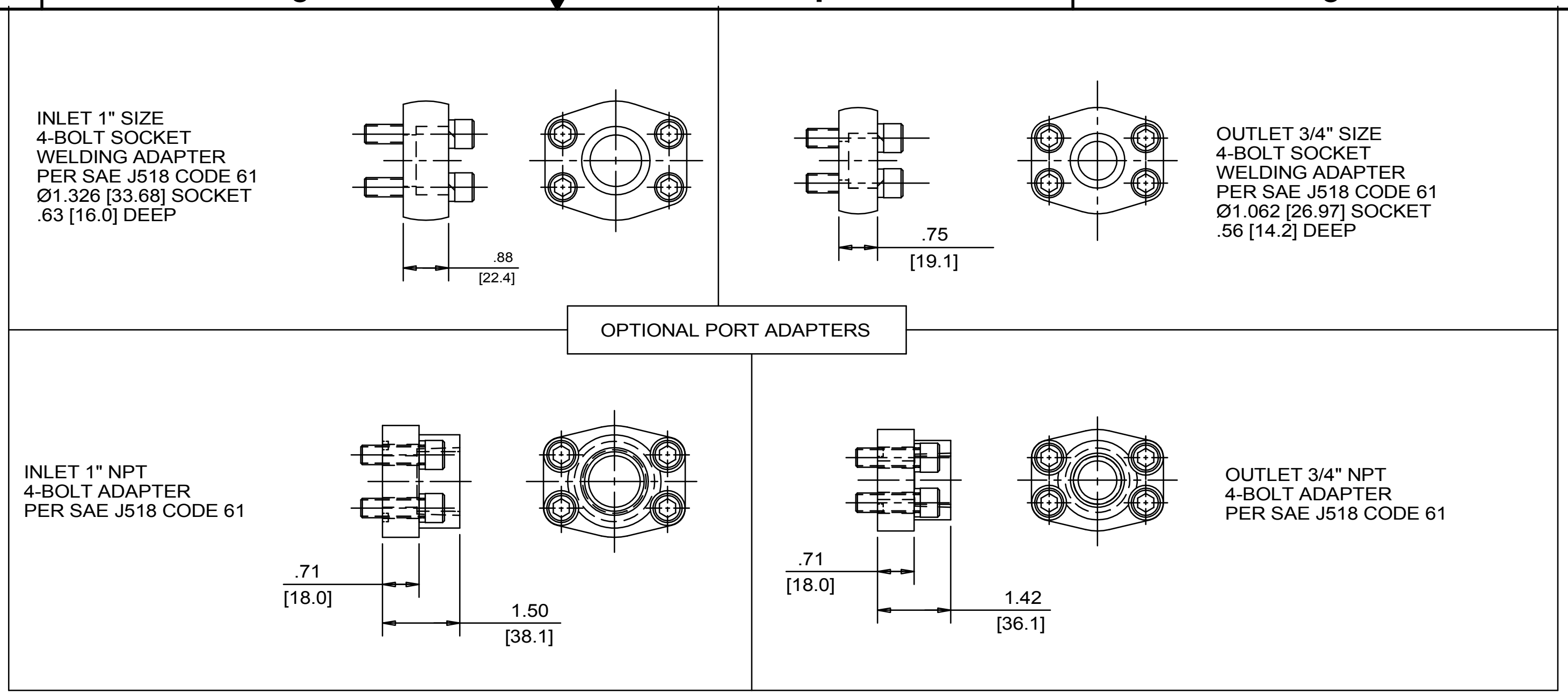


| REVISION HISTORY | | | | | |
|------------------|------|-----|--|---------|---------------|
| CHG NO | ZONE | REV | DESCRIPTION | DATE | BY / APPROVED |
| 11-0187 | AI | 9 | CHANGED TITLE, WAS AA3G | 5-16-11 | ERH / ERH |
| 22-0000 | ALL | 10 | UPDATED TITLE BLOCK, FORCES & MOMENT STAMP | 1-26-22 | CDG / CDG |

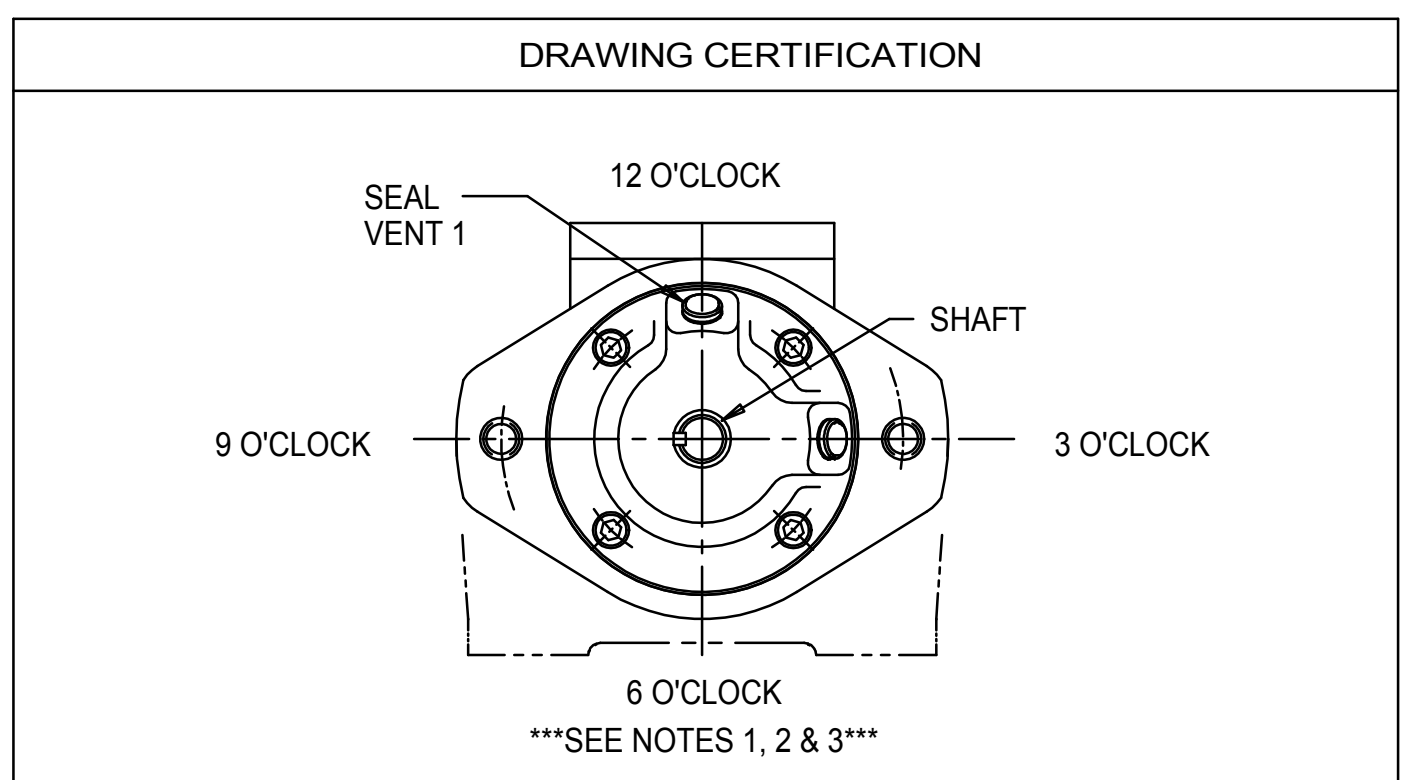
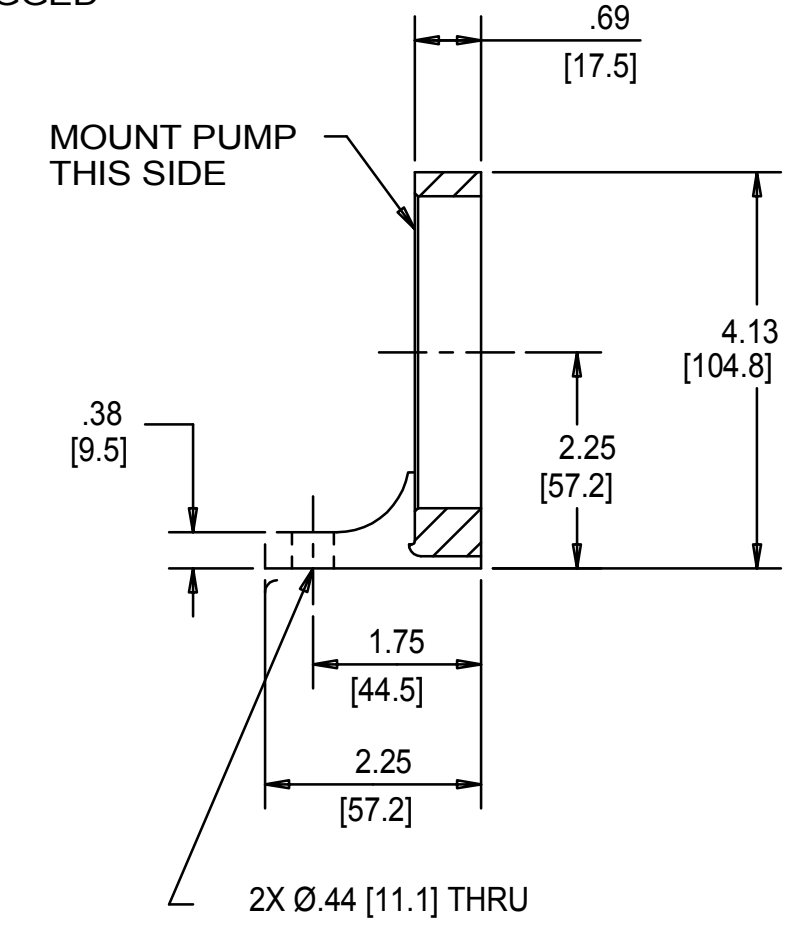
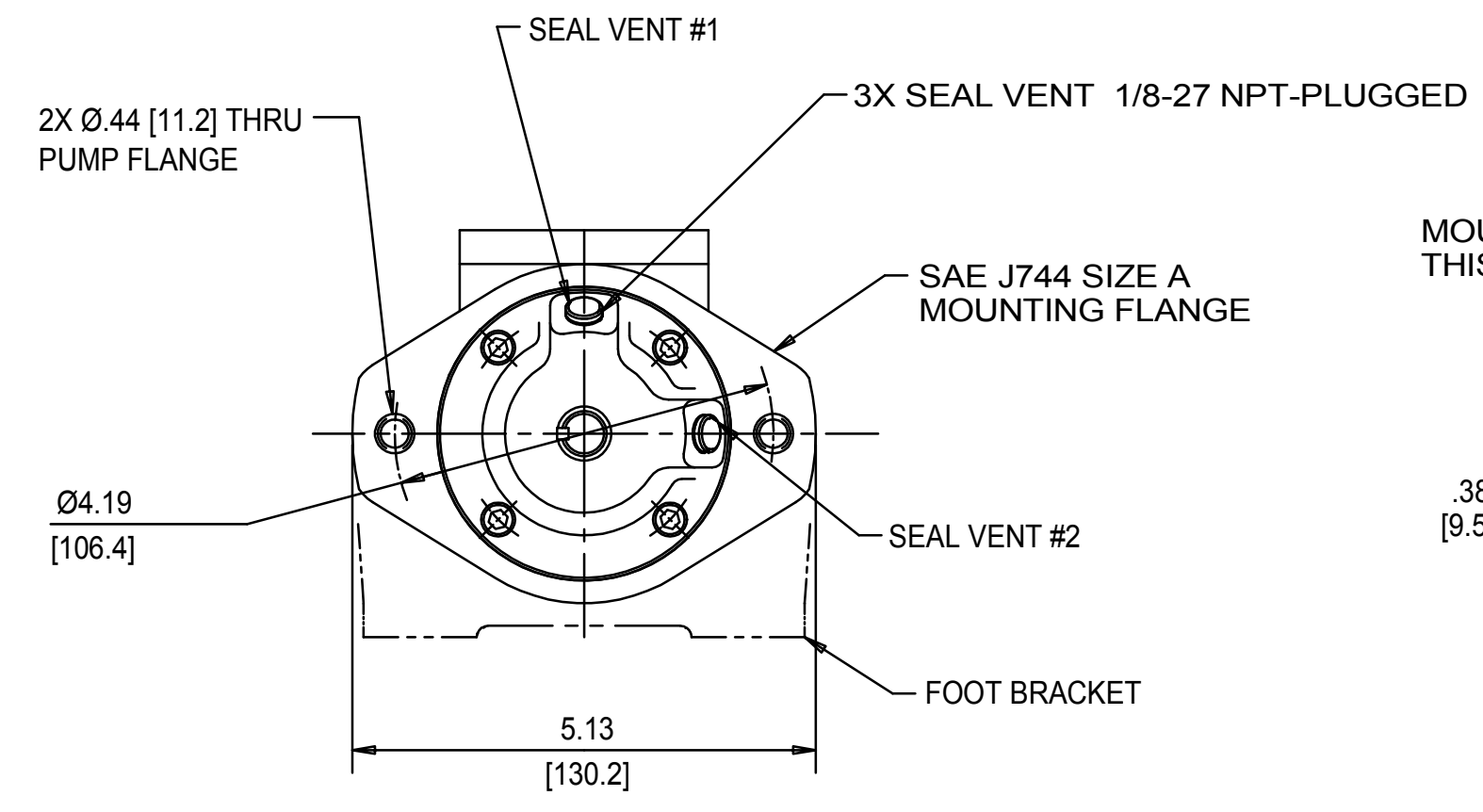
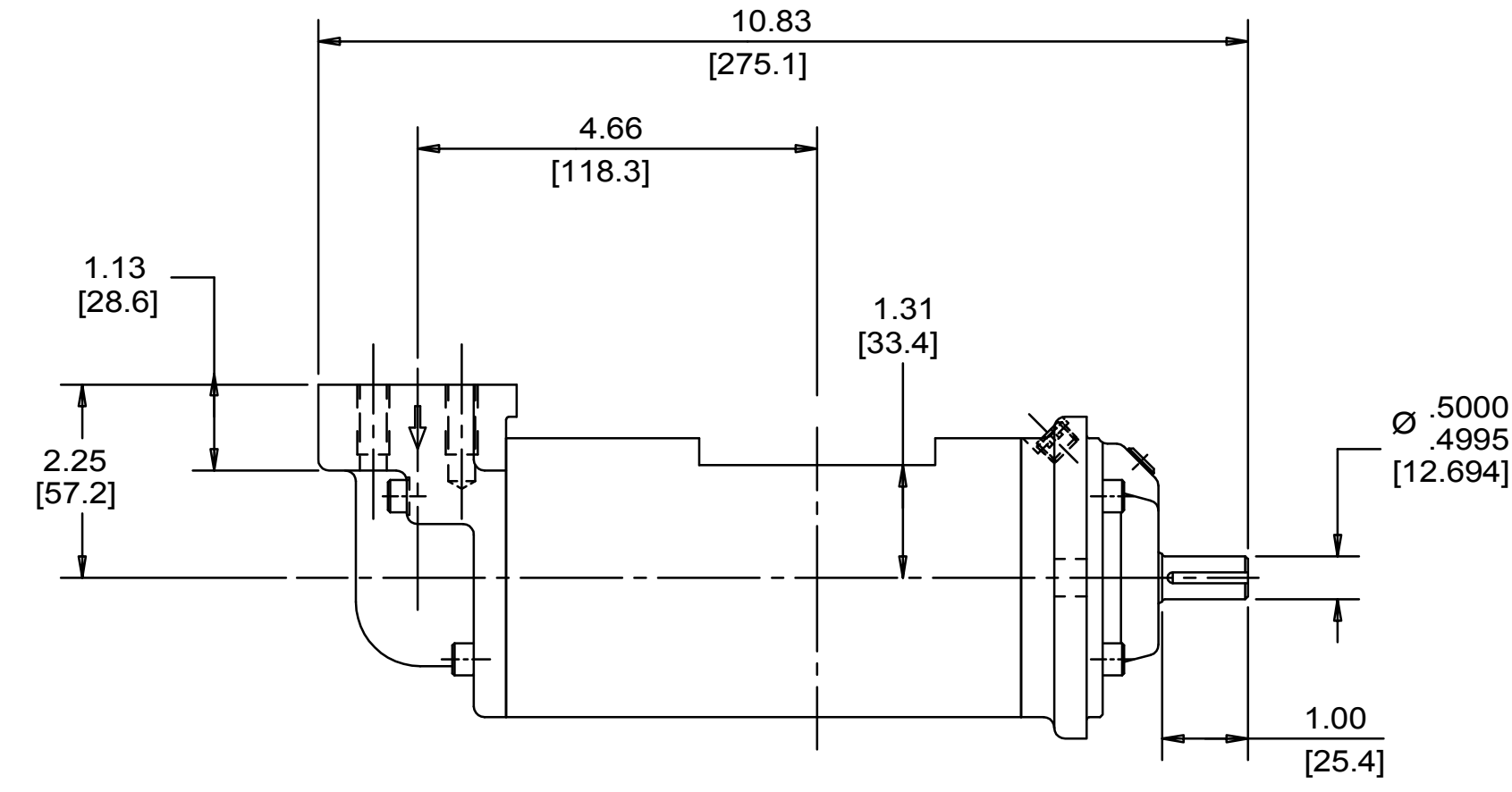


COORDINATE SYSTEM FOR MAXIMUM PUMP FORCES (F) AND MOMENTS (M)

| | LBF | N |
|--------------------|------|-----|
| INLET: Fx, Fy, Fz | 37.5 | 169 |
| OUTLET: Fx, Fy, Fz | 28.1 | 125 |

| | LB FT | Nm |
|--------------------|-------|------|
| INLET: Mx, My, Mz | 62.5 | 84.7 |
| OUTLET: Mx, My, Mz | 46.9 | 63.6 |

FORCE AND MOMENT VALUES ARE RELATIVE TO CENTER OF INLET AND OUTLET PORT FACES.



CUSTOMER NAME _____

CUSTOMER PO NUMBER _____

CUSTOMER PART NUMBER _____

BOM NUMBER _____

PUMP TYPE _____

SHAFT ROTATION _____

INLET PORT ORIENTATION _____

OUTLET PORT ORIENTATION _____

FOOT BRKT. ORIENTATION _____

INLET PORT OPTION _____

INLET ADAPTER OPTION _____

OUTLET ADAPTER OPTION _____

OTHER INFORMATION _____

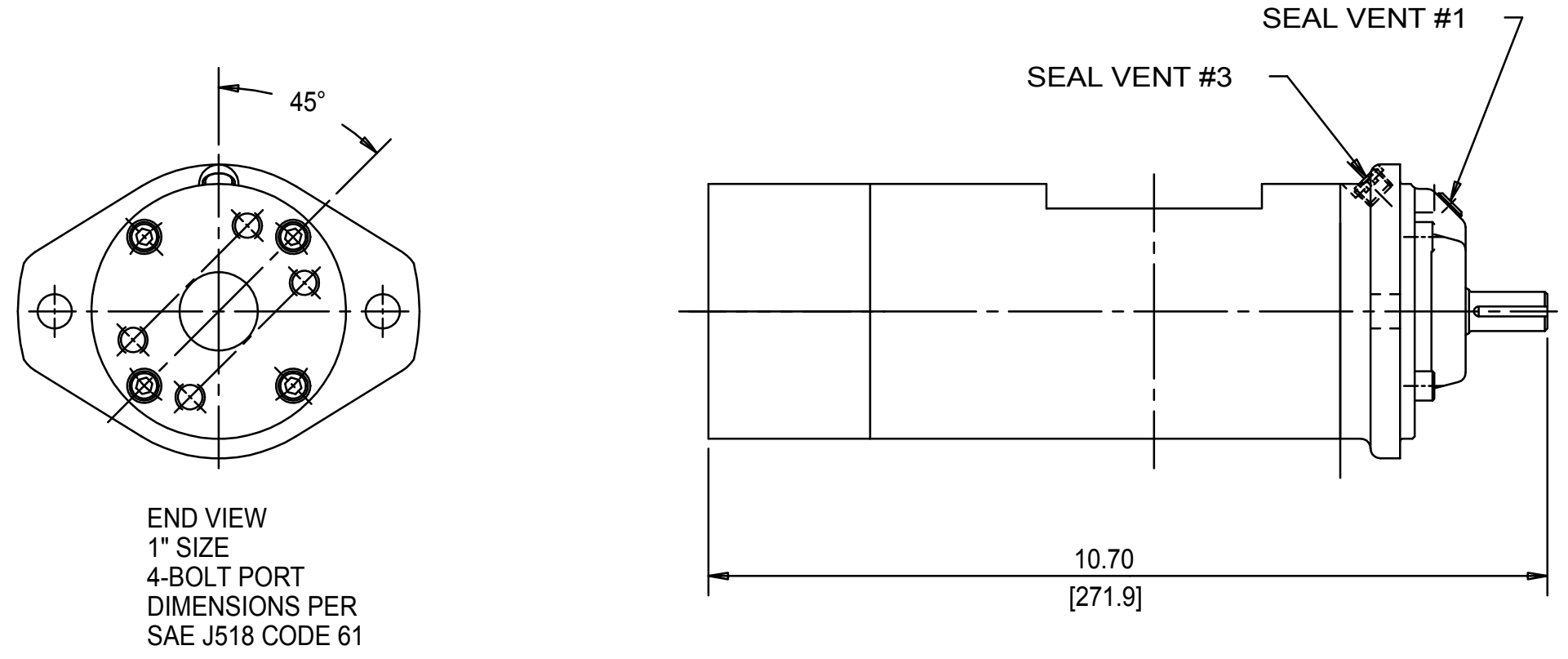
CERTIFIED BY _____

CERTIFIED DATE _____

IMO ORDER NUMBER _____

DATA REVISION NUMBER _____

VIEWS FOR ALTERNATE AXIAL INLET PORT CONFIGURATION



- NOTES:
- TO MAXIMIZE SEAL LIFE, SEAL VENT MUST BE ORIENTED UPWARD (12 O'CLOCK) WHEN PUMP IS INSTALLED HORIZONTALLY. VENT ORIENTATION IS NOT CRITICAL WHEN PUMP IS INSTALLED WITH SHAFT VERTICALLY UPWARD.
 - PORT, FOOT, AND SEAL VENT ORIENTATIONS ARE SUPPLIED AS SHOWN ON DRAWING UNLESS OTHERWISE SPECIFIED.
 - ALTERNATE PORT AND FOOT ORIENTATIONS ARE PROVIDED IF SPECIFIED ON ORDER. AVAILABLE ORIENTATIONS ARE 3, 6, 9, AND 12 O'CLOCK.
 - BOLT PATTERN FOR SAE 4-BOLT AXIAL INLET IS ALWAYS ORIENTED AS SHOWN WITH RESPECT TO OUTLET PORT.
 - APPROXIMATE PUMP WEIGHT (WITHOUT ADAPTERS):
FLANGE MOUNT PUMP--- 18.0 LBS. (8.2 kgs)
FOOT MOUNT PUMP---- 20.1 LBS. (9.1 kgs)
 - UNLESS OTHERWISE SPECIFIED, ALL DIMENSIONS ARE IN INCHES. DIMENSIONS IN Ø ARE MILLIMETERS.

| | | | | |
|--|-----|---------|-------------|--------------------------|
| DRAWN | ERH | 3-3-99 | | |
| CHECKED | NRS | 3-25-99 | | |
| APPR | MJC | 3-25-99 | | |
| UNLESS OTHERWISE SPECIFIED ASME Y14.5M-1994 | | | TITLE | OUTLINE STANDARD (STEEL) |
| ELEMENTS: SELECTION STRAINER AND DISCHARGE RELIEF VALVE MUST BE PROVIDED ALIGNMENT UNITS ARE ACCURATELY ALIGNED AT THE FACTORY. ALIGNMENT SHOULD BE CHECKED BEFORE STARTING TO INSURE THAT IT IS STILL WITHIN TOL. IDENTIFYING FLUSH SELECTION PRING BEFORE CONNECTING PLAMP. PRIME AND VENT PUMP. READ INSTRUCTION MANUAL FOR DETAILS BEFORE STARTING. | | | FIRST ORDER | 3G/_S__A095__ |
| IDENTIFYING E1102A | | | SIZE | F |
| IDENTIFYING SDD19643 | | | SCALE | 1/2 |
| IDENTIFYING SEE NOTE 5 | | | WEIGHT | |
| IDENTIFYING SHEET 1 OF 1 | | | | |