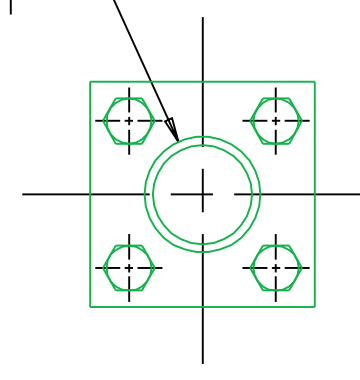
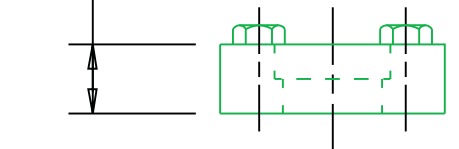


| REVISION HISTORY | | | | | | |
|------------------|------|-----|----------------------------------|----------|-----|----------|
| CHG NO | ZONE | REV | DESCRIPTION | DATE | BY | APPROVED |
| 96-00043 | B | 1 | ADDED GENERIC OUTLINE DATA BLOCK | 1-23-96 | DMS | MJC |
| 99-00000 | ALL | 2 | REVISED FOR APPV'D ANSI FORMAT | 06-25-99 | JTT | ERH |
| 00-0579 | ALL | 3 | UPDATED TO CURRENT STANDARDS | 11-13-00 | DMM | DMM |

OUTLET 2" SIZE SOCKET WELDING ADAPTER Ø2.414 [61.31] SOCKET .72 [18.3] DEEP

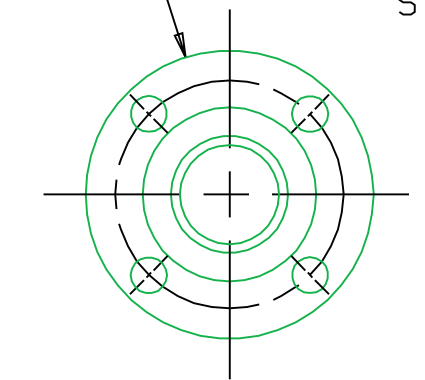


1.44 [36.5]

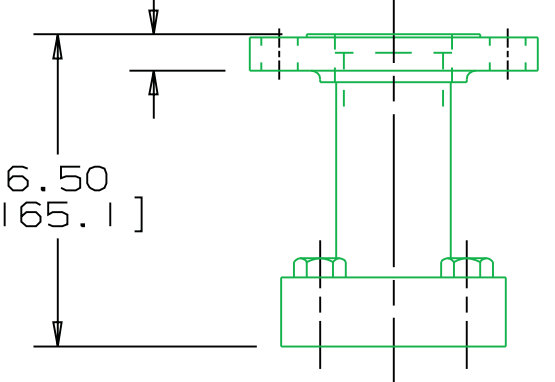


SOCKET WELDING OUTLET OPTION

OUTLET 2" SIZE 150# ANSI B16.5 RAISED FACE FLANGE HOLES TO STRADDLE CENTERLINES

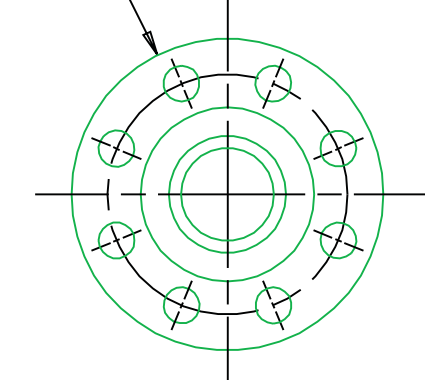


.75 [19.1]

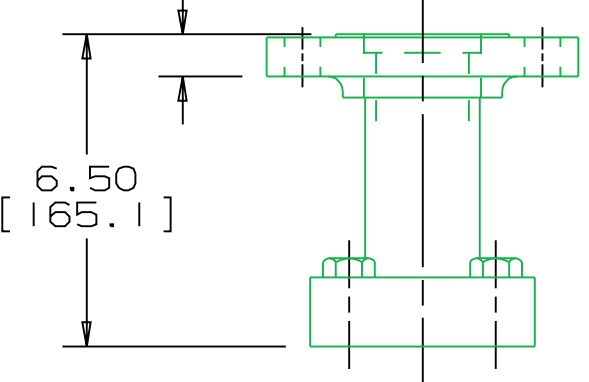


150# RF OUTLET OPTION

OUTLET 2" SIZE 300# ANSI B16.5 RAISED FACE FLANGE HOLES TO STRADDLE CENTERLINES

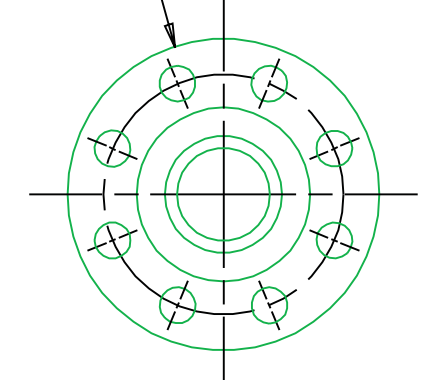


.88 [22.2]

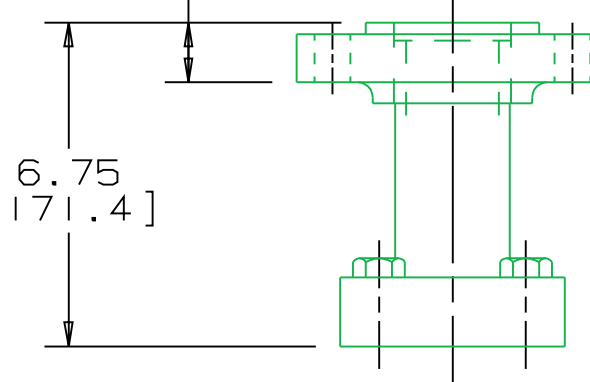


300# RF OUTLET OPTION

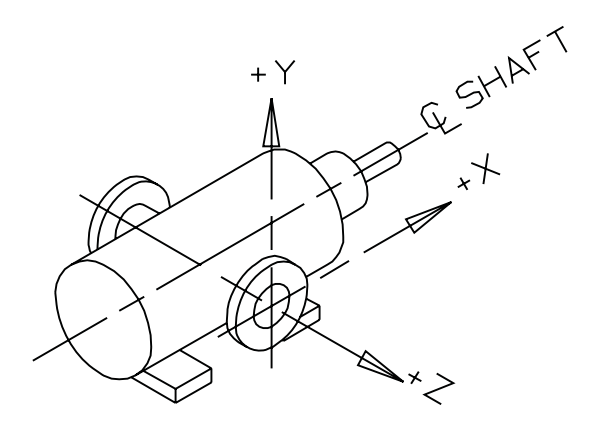
OUTLET 2" SIZE 600# ANSI B16.5 RAISED FACE FLANGE HOLES TO STRADDLE CENTERLINES



1.25 [31.8]



600# RF OUTLET OPTION



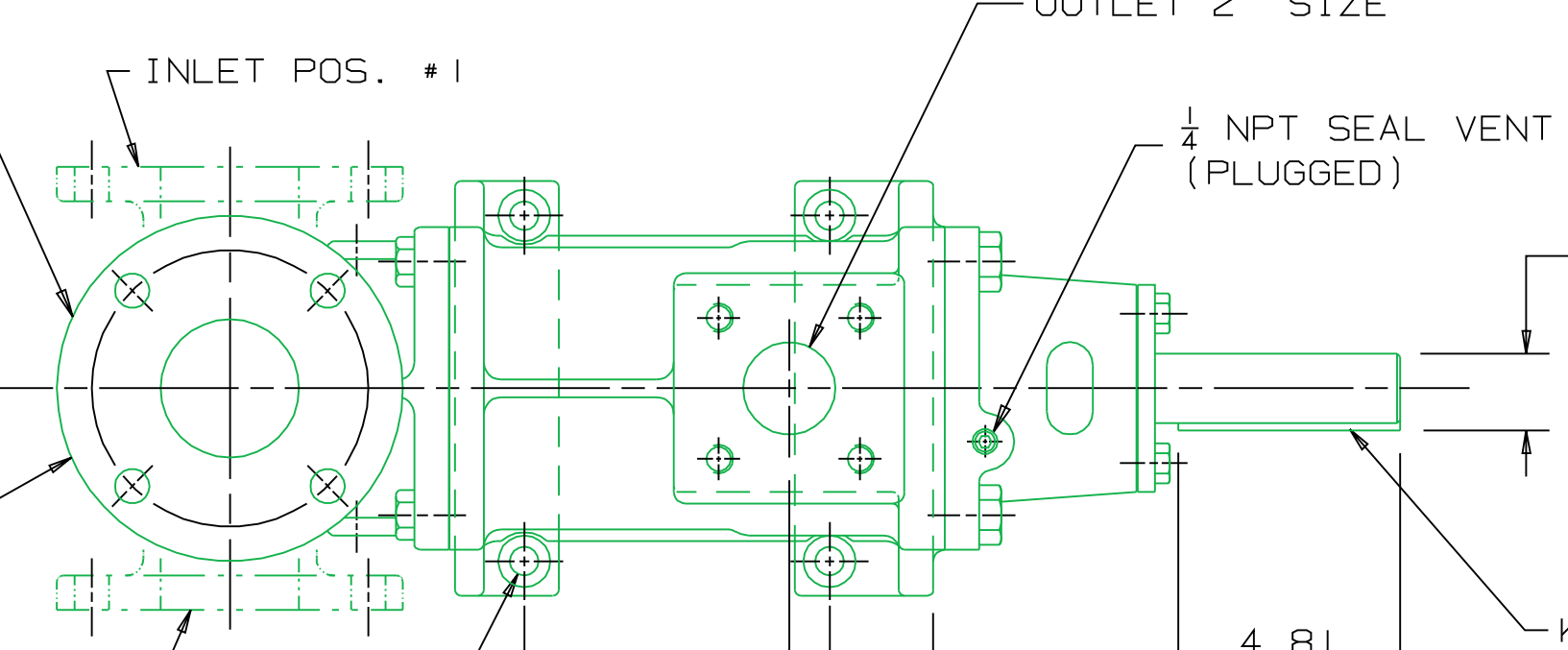
COORDINATE SYSTEM FOR MAXIMUM PUMP FORCES (F) AND MOMENTS (M)

INLET:
 FX=225 LBF [1000 N] MX= 375 LB FT [508 N·m]
 FY=225 LBF [1000 N] MY= 375 LB FT [508 N·m]
 FZ=225 LBF [1000 N] MZ= 375 LB FT [508 N·m]

OUTLET:
 FX=150 LBF [667 N] MX= 250 LB FT [339 N·m]
 FY=150 LBF [667 N] MY= 250 LB FT [339 N·m]
 FZ=150 LBF [667 N] MZ= 250 LB FT [339 N·m]

FORCE AND MOMENT VALUES ARE RELATIVE TO CENTER OF INLET AND OUTLET PORT FACES.

INLET 3" SIZE 125#/150# FLAT FACE FLANGE WILL MATE TO 125#/150# ANSI B16.1/B16.5 RAISED FACE FLANGE HOLES TO STRADDLE CENTERLINES



INLET POS. #1

OUTLET 2" SIZE

1/4 NPT SEAL VENT (PLUGGED)

1.66 [42.1]

STD INLET POS

INLET POS. #2

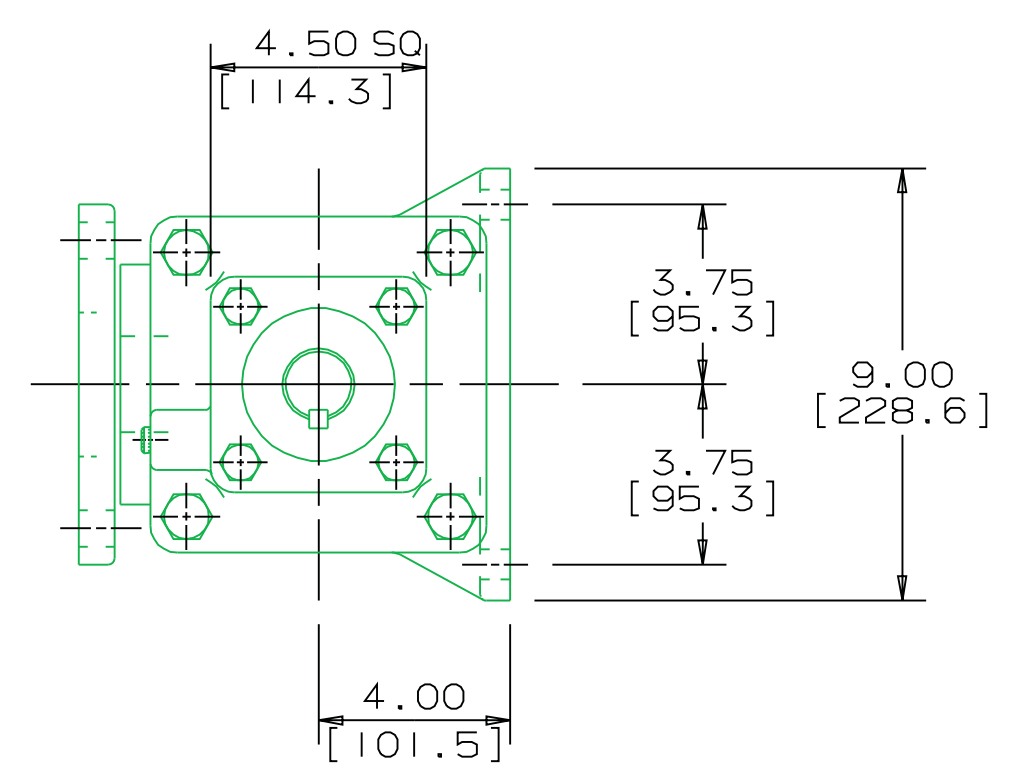
KEY .375 [9.5] SQ

4X Ø.63 [15.9] THRU

.88 [22.2]

6.63 [168.3]

2.25 [57.1]



4.50 SQ [114.3]

3.75 [95.3]

3.75 [95.3]

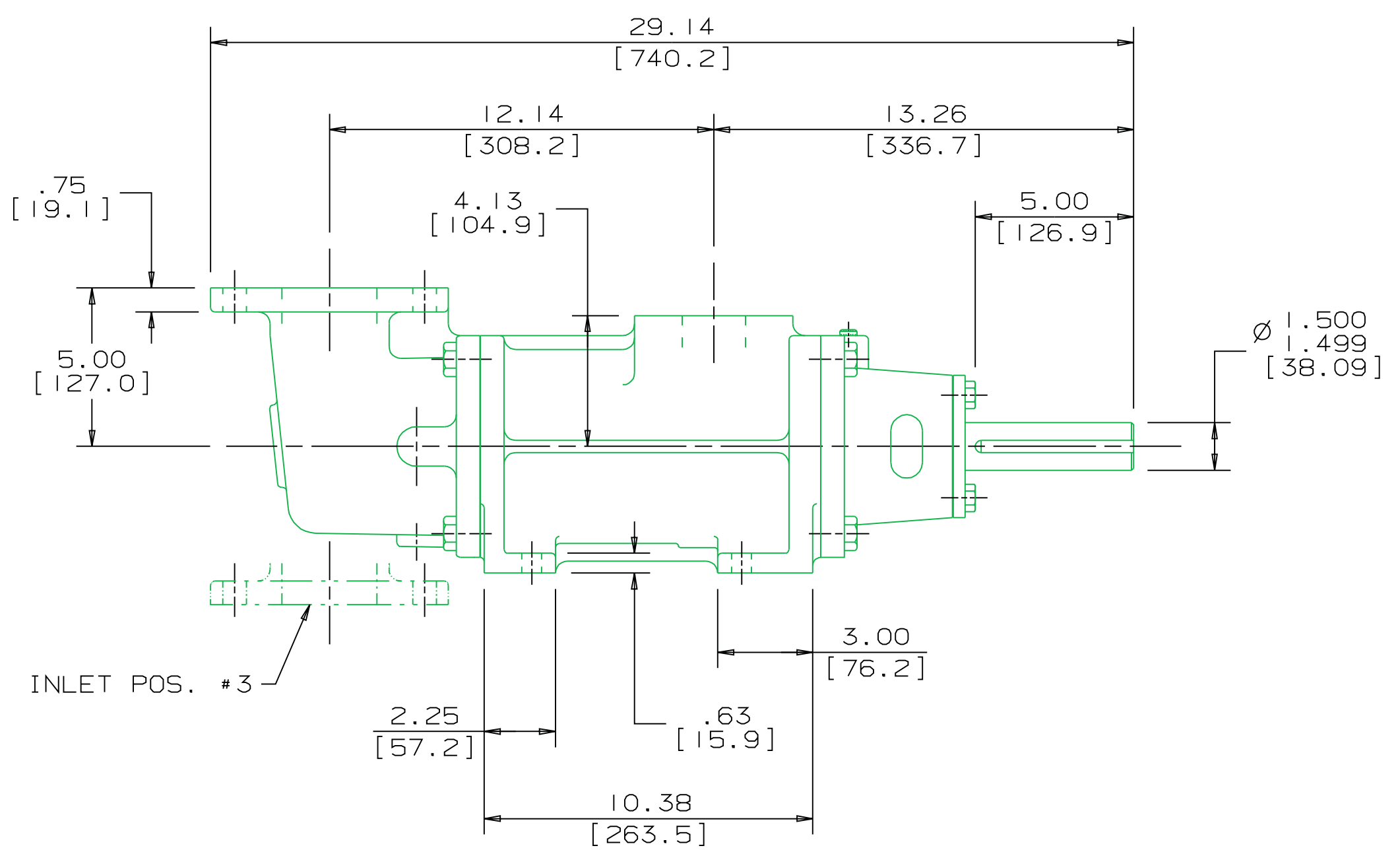
9.00 [228.6]

4.00 [101.5]

← ROTATION →

NOTES:

- UNLESS OTHERWISE SPECIFIED, ALL DIMENSIONS ARE IN INCHES. DIMENSIONS IN [] ARE MILLIMETERS.
- TO MAXIMIZE SEAL LIFE, SEAL VENT MUST BE ORIENTED UPWARD (12 O'CLOCK) WHEN PUMP IS INSTALLED HORIZONTALLY. THIS IS NORMAL VENT ORIENTATION WHEN PUMP FEET ARE ORIENTED DOWNWARD. SEAL VENT ORIENTATION IS NOT CRITICAL WHEN PUMP IS INSTALLED WITH SHAFT VERTICALLY UPWARD.
- PORT, FOOT, AND SEAL VENT ORIENTATIONS ARE SUPPLIED AS SHOWN ON DRAWING UNLESS OTHERWISE SPECIFIED.
- ALTERNATE INLET PORT POSITIONS ARE PROVIDED IF SPECIFIED ON ORDER. AVAILABLE POSITIONS ARE: STANDARD, POSITION #1, POSITION #2 OR POSITION #3. ALL INLET PORT POSITIONS ARE RELATIVE TO OUTLET PORT.
- ESTIMATED WEIGHT (WITHOUT PORT ADAPTERS) 154 LBS [69.9 kg].



29.14 [740.2]

12.14 [308.2]

13.26 [336.7]

.75 [19.1]

4.13 [104.9]

5.00 [126.9]

5.00 [127.0]

Ø 1.500 [38.09]

2.25 [57.2]

.63 [15.9]

3.00 [76.2]

10.38 [263.5]

INLET POS. #3

| DRAWING CERTIFICATION | |
|----------------------------|-------|
| CUSTOMER NAME | ----- |
| CUSTOMER PO NUMBER | ----- |
| CUSTOMER PART NUMBER | ----- |
| BOM NUMBER | ----- |
| PUMP TYPE | ----- |
| SHAFT ROTATION | ----- |
| INLET PORT POSITION | ----- |
| OUTLET PORT ADAPTER OPTION | ----- |
| OTHER INFORMATION | |
| CERTIFIED BY | ----- |
| CERTIFIED DATE | ----- |
| IMO ORDER NUMBER | ----- |
| DATA REVISION NUMBER | ----- |

| | | | | |
|---|----------|---------|---|---|
| DRAWN | MLW | 7-7-94 | | |
| CHECKED | MLW | 7-7-94 | | |
| APPD | MJC | 7-19-94 | | |
| PROCESS | METHODS | | TITLE OUTLINE STANDARD (IRON) G3D-218 | |
| COMMENTS: STANDARD ROTATION IS CLOCKWISE WHEN VIEWED FROM COUPLING END OF PUMP. SUCTION STRAINER AND DISCHARGE RELIEF VALVE MUST BE PROVIDED. ALIGNMENT: UNITS ARE ACCURATELY ALIGNED AT THE FACTORY. ALIGNMENT SHOULD BE CHECKED BEFORE STARTING TO ENSURE THAT IT IS STILL WITHIN .005 [0.13] F.W. PRESTARTING: FLUSH SUCTION PIPING BEFORE CONNECTING PUMP. PRIME AND VENT PUMP. DO NOT START PUMP WITH VALVES CLOSED. READ INSTRUCTION MANUAL FOR DETAILS BEFORE STARTING. | | | THIRD ANGLE PROJECTION | FIRST ORDER SIZE CAGE CODE DWG NO 59180 SDD17974 |
| USED ON | 3212/150 | SCALE | 1/4 | WEIGHT SEE NOTE 5 |
| | | | SHEET | 1 OF 1 |

FOOT MOUNT, RIGHT ANGLE INLET
 IRON 3D-218